



Foreign Focus Australia

Tuesday, December 05, 2017

Limited Showers Over the Next 10 Day Improves Harvest Conditions for the East but Wettest Areas in S. NSW Likely Remain Slow; Favorable W. Harvest

Australian Wheat/Canola

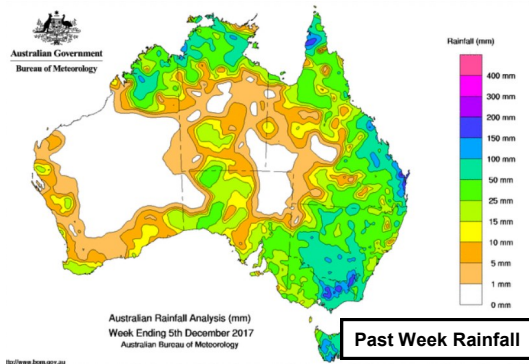
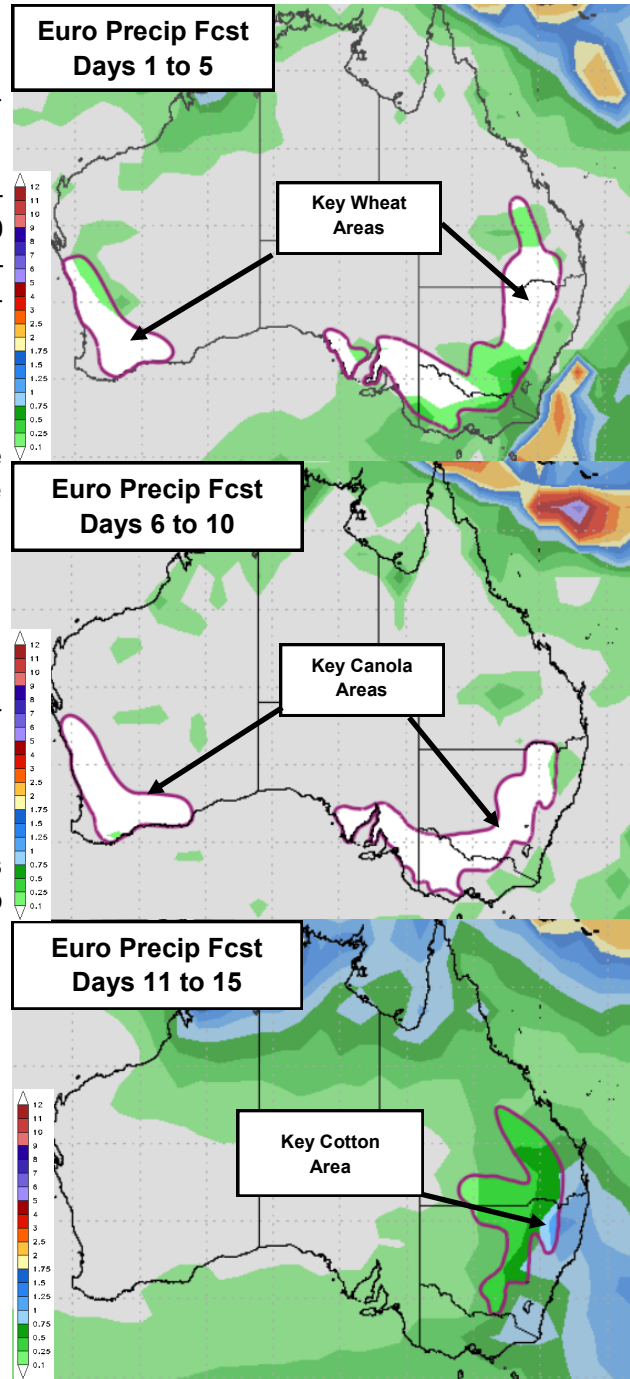
- A few light showers lingered in S. NSW yesterday
- A few showers could skirt S. NSW on Thursday but overall drier pattern over the next 10 days aids slow recovery; rain uptick in the 11-15 day has low confidence and heaviest showers likely confined to areas east of the belt
- Limited W. Australia harvest interruptions
- Euro 16-30 day wetter than the CFS in the southeast and would hold onto/reintroduce delays

Australian Cotton

- Showers eased dryness over the weekend
- Drier pattern over the next 10 days but showers tick up again in the east for the 11-15 day

Australian Sugarcane

- Showers the past several days eased dryness across the belt; remaining stress limited to about 10% in the N. belt



Region	Past Day Amounts	Past Day Coverage	5-Day Fcst Amounts	5-Day Fcst Coverage
Australia Wheat/Canola	.10 to .75"	10%	.10 to .75"	10%
Australia Cotton	Mainly Dry	Dry	.10 to .50"	<10%
Australia Sugarcane	.25 to 1", lcl 2"	45%	.10 to .50"	<10%



Foreign Focus China

Tuesday, December 05, 2017

Wetter Yangtze River Valley Trends Late Next Week Viable

North China Plain Wheat

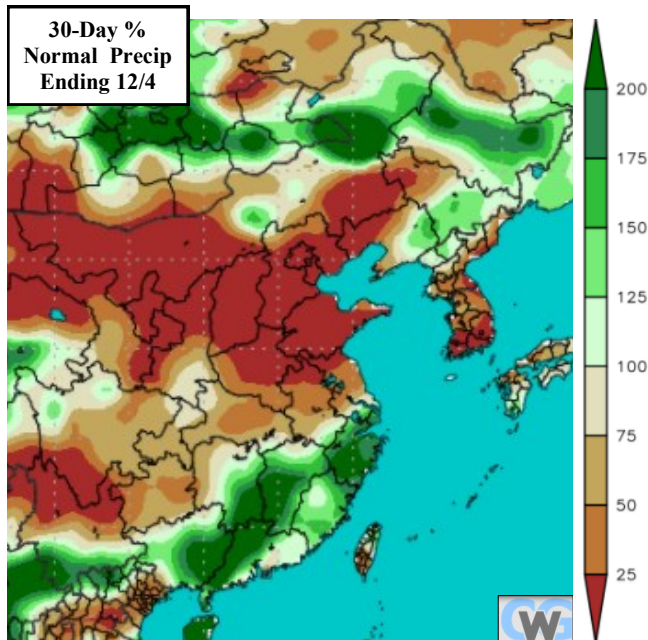
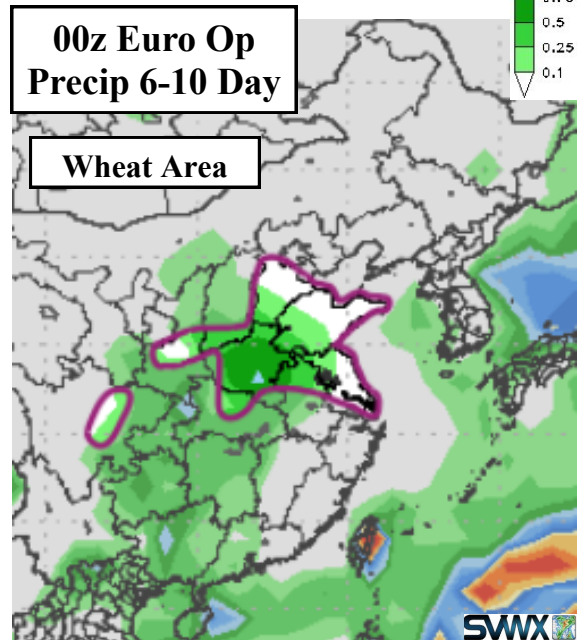
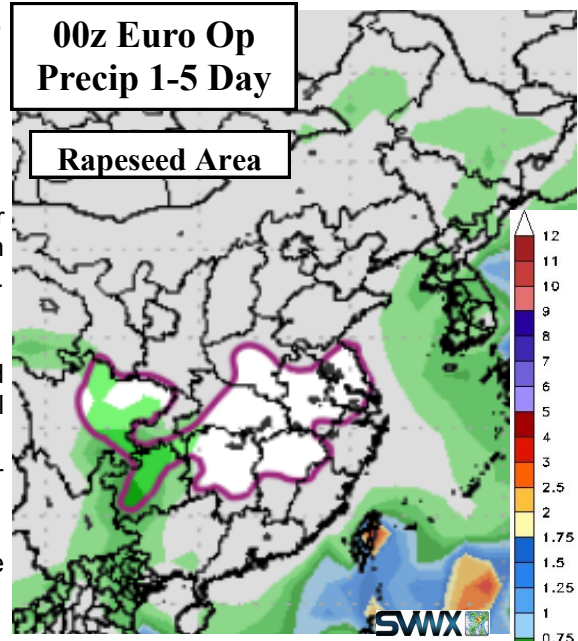
- Up to 1/2 the belt should push into dormancy by the middle of December, eliminating moisture needs
- Shower potential did increase next Thu./Fri. in both the GFS and Euro forecast guidance; precip would boost soil moisture and aid slow growth in S. belt
- No winterkill risks at this time
- Latest Euro 16-30 day continues to favor a drier than normal pattern and the latest CFS shifted in that direction; moisture supplies would slip for the S. 1/4-1/2 of the belt that may not be dormant

China Rapeseed

- Increased chance for precipitation next week would improve moisture supplies to support growth as soil moisture levels have been falling in the N. 3/4
- Drier 16-30 day bears watching for minor stress development, particularly if rains next week fail

China Sugarcane

- Any harvest interruptions the next 2 weeks would be brief and non-damaging



Region	Past 3-Day Amounts	Past 3-Day Coverage	5-Day Fcst Amounts	5-Day Fcst Coverage
China Rapeseed	Mostly Dry	Dry	.10 to .25"	<10%
China Wheat	Mostly Dry	Dry	.10 to .25"	<10%
China Sugarcane	Mostly Dry	Dry	Mostly Dry	Dry



Commodity Weather Group
Foreign Focus
Europe/FSU

Tuesday, December 05, 2017

Spain/Morocco Rains Likely to Return Next Week Aiding Wheat

Europe

Wheat/Rapeseed:

- Showers favored N. Germany, W. Poland, and W. Romania yesterday
- Showers keep soil moisture abundant and should ease dryness in C. 1/3 of Spain next week
- Colder than normal pattern over next 2 weeks pushes wheat into dormancy; W. France and Spain still likely to stay mild enough for late growth but U.K. less well established

FSU

Winter Wheat:

- Showers favored S. Russia yesterday
- Showers taper off today but light showers still possible in most areas in next 10 days keeping wheat moisture favorable
- Unseasonably mild pattern still allows some unusually late growth in S. Ukraine/S. Russia next 2 weeks allowing crops to take advantage of recent rains
- No cold threats of note but colder conditions in the south will be needed later in the month to harden the crop for winter
- Snow cover still limited over next 2 weeks with more than 3/4 of wheat area vulnerable if a Siberian cold push ever comes

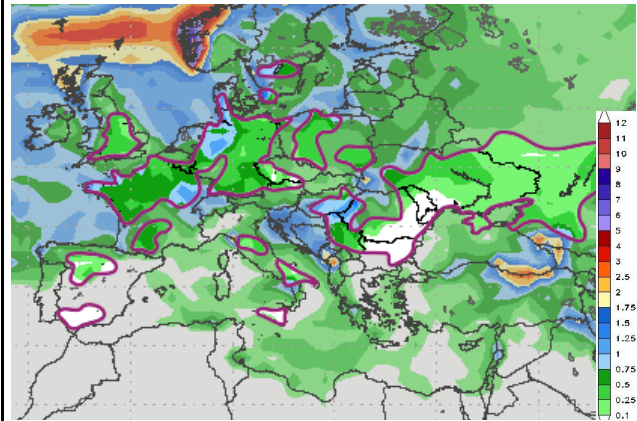
North Africa

Winter Wheat:

- Rains were confined to the far NE yesterday
- Showers are likely to return next week helping to sustain early development
- 16-30 day rains are more limited in Morocco which could hamper growth late month

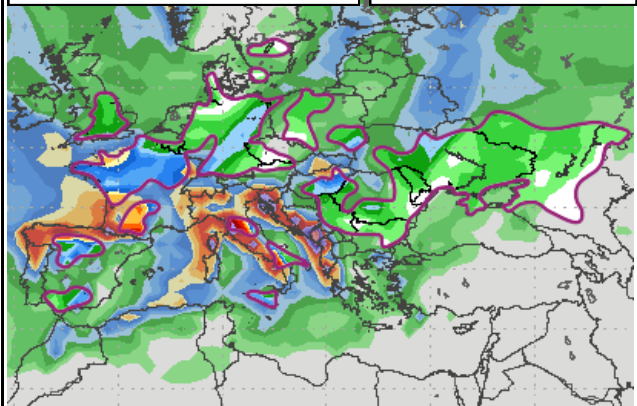
1-5 Day GFS Precip Fcst

Wheat Area Outlined

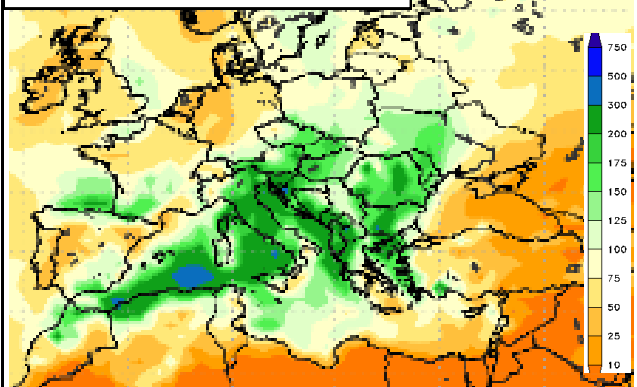


6-10 Day GFS Precip Fcst

Wheat Area Outlined



GFS 11-15 Day Precip Anomaly



Region	Past 1 Day Amounts	Past 1 Day Coverage	5-Day Fcst Amounts	5-Day Fcst Coverage
Europe Wheat	.25 to 1"	10%	.25 to 1", lcl 2"	60%
FSU Wheat	.25 to 1"	35%	.25 to 1", lcl 2"	25%
N. Africa Wheat	.10 to .50"	<10%	.10 to .50"	<10%

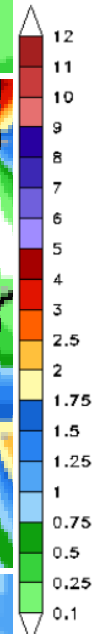
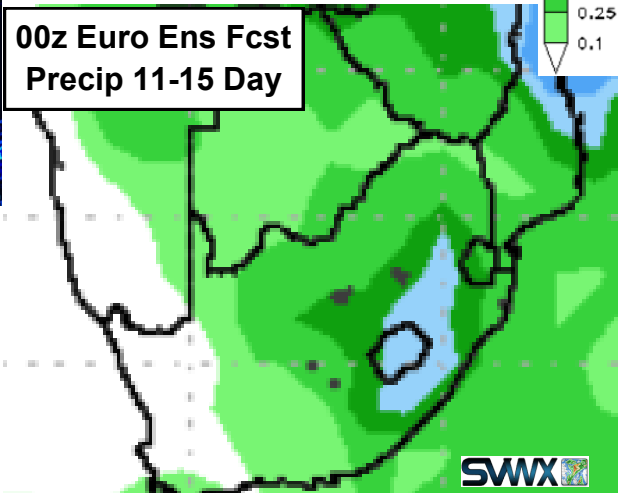
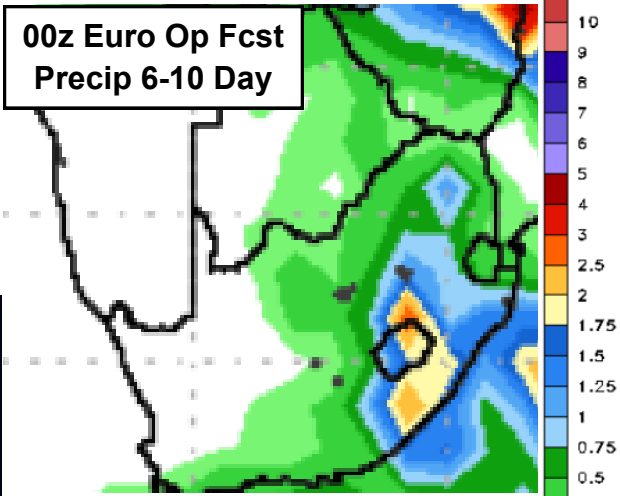
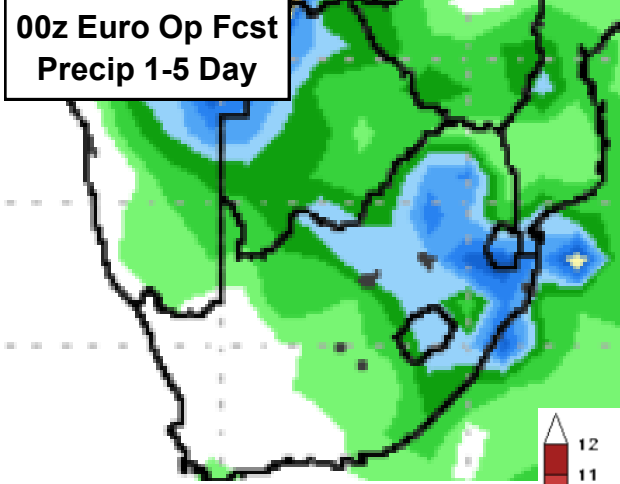
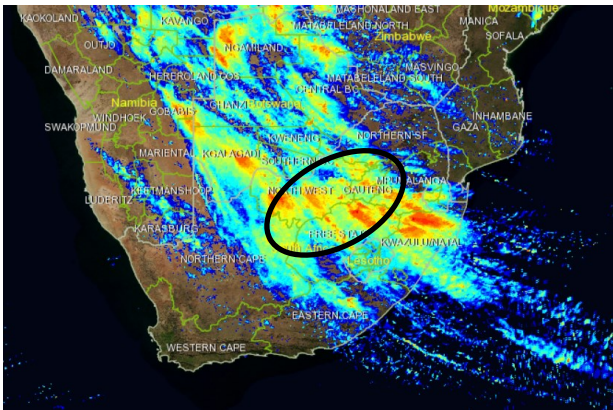


Foreign Focus South Africa

Tuesday, December 05, 2017

Showers Yesterday Eased Remaining W. Dryness

- Showers yesterday eased dryness and aided germination/early growth in the west
- Showers over the next few days and again in the 6-10 continue to aid growth across much of the belt
- Wetter 11-15 day trends focus across the S. belt
- Euro 16-30 day is drier than the CFS and could see dryness redevelop (west-focused)



Region	Past Day Amounts	Past Day Coverage	5-Day Fcst Amounts	5-Day Fcst Coverage
South Africa Corn	.25 to 1", lcl 1.5"	75%	.25 to 1.25", lcl 2"	60%





Foreign Focus South America

Tuesday, December 05, 2017

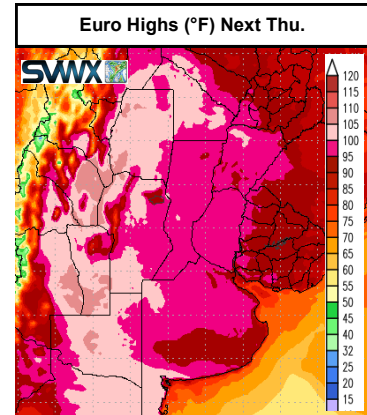
Wetter Risks Remain to Arg. 11-15 Day Outlook on Much of Guidance

Brazilian 1st Crop Corn/Soy

- Rains continue to scatter across north next 2 weeks and aid crop growth; 16-30 day reverts drier in NE 15%, but limited concerns given abundant near-term moisture
- Moisture supplies slip in south 1/3 next 10 days (particularly Rio Grande do Sul), but 11-15 day shifting wetter late (16-30 day also wetter); rains will be important to limit stress, particularly in RGDS

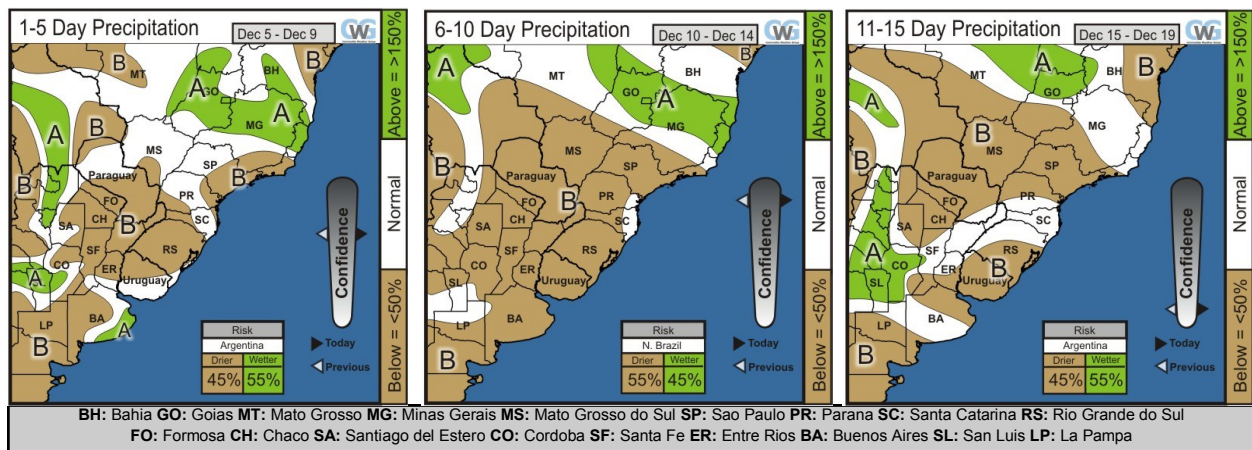
Brazilian Coffee/Sugarcane

- Scattered rain in mainly N. & C. Minas Gerais/Espirito Santo in past day; frequent rains next 2 weeks & 16-30 day, aiding much of coffee; Center-South sugar slips drier 6-15 day after near-term showers, but rains return 16-30 day



Argentine Corn/Soy/Wheat

- Two weak disturbances (Wed./early Thu. & Fri./early Sat.) bring only patchy and mostly light showers, with odds very low for extensive relief in most of driest C. & NW corn/soy areas; otherwise dry into early 11-15 day, with chance for widespread 90s°F (33 to 38°C) by end of 10-day (see Euro map above); heat moderates with shower chances that return later in 11-15 day
- Most models much wetter 11-15 day than our forecast and pose wetter risk, but our forecast shifted only slightly wetter given recent wet model biases; S. Santa Fe/Entre Rios/N. Buenos Aires (40% corn/soy) at most risk for expanding stress, particularly to early pollinating corn
- 16-30 day rains still limited in central/east corn/soy, with ~1/2 of belt at risk for moisture stress; heat more likely early in period to stress early-pollinating corn but moderates again late
- Wheat harvest interruptions minor from showers rest of this week & 11-15 day



Region	Past 24-Hr Amounts (Coverage)	5-Day Forecast Amounts (Coverage)
Brazil Sugarcane/Coffee	.25 to 1", locally 1.5" (10%/30%)	.50 to 2.5", locally 4" (75%/85%)
Brazil 1st Crop Corn/Soy	.25 to 1", locally 1.75" (20%/30%)	.50 to 2", locally 4" (65%)
Argentina Corn/Soy	Mostly Dry	.25 to .75", locally 1.5" (40%)
Argentina Wheat	Mostly Dry	.25 to 1", locally 2" (45%)